



Intellimix

Desktop Mixer

Completely familiar, entirely revolutionary. We designed Intellimix to stimulate your creativity and to simplify your daily work. Enjoy a whole new perspective of intelligent audio mixing.





reddot design award winner 2017



Four G-Touch Faders® guide your fingers through a well shaped groove and offer various fader modes. Experience exceptional precision.



The free Octopus software upgrade gives you control over up to eight channels with one single Intellimix interface. Your sources will be displayed in two layers.



Intellimix is compatible with the whole package of AoIP solutions. Easily integrate it into your Livewire, AES67, Dante, MADI or Ravenna environment.



An intuitive user interface secures quick and reliable news production even when time is of the essence. Individual profiles and setups ease and fasten your work.



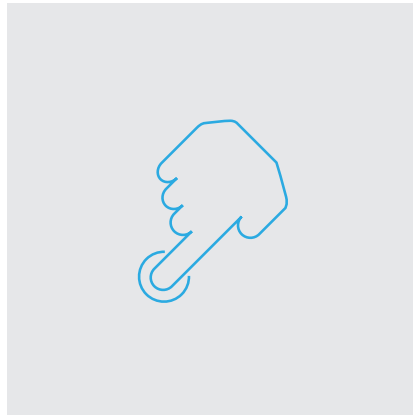
ADAT and SDI connectivity perfectly support the handling of audio for video. With the intuitive G-Touch® faders there's no need to turn away from your monitor.



Intellimix fits any desktop. Lightweight, with low power consumption and without thermal load, Intellimix fully complies all the challenges of broadcast vehicles.

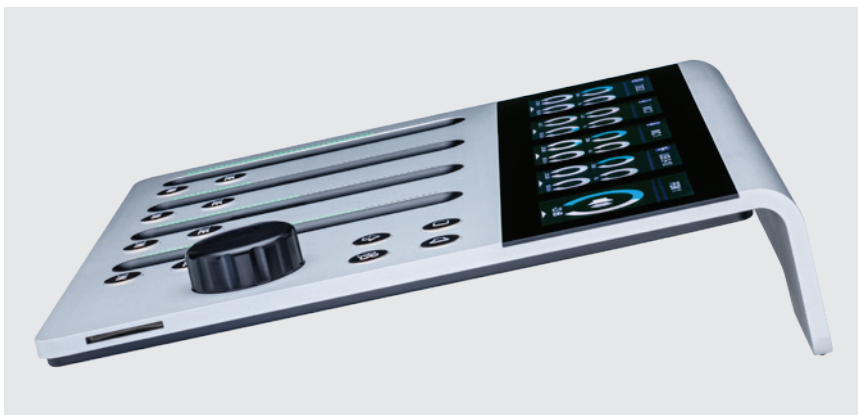
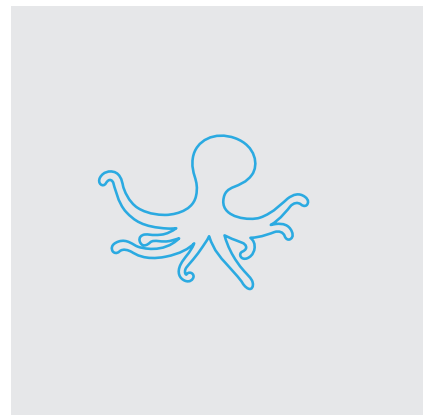


intellimix



Intellimix Control Unit

Display	Light hi-res color TFT transreflective widescreen with 250Cd/m2
Displaysensor	Gesture ready 5-finger touch sensor
Faders	4 x G-Touch [®] 120mm faders with multifunctional position indicators
Keys	12 x illuminated sealed hard keys
Chassis	Solid aluminum desktop cabinet with SD Card reader



Intellimix Desktop Mixer YT2200

content of delivery:

- 1x Intellimix Base Unit
- 1x Intellimix Control Unit
- 1x permanently installed cable to connect both units
- 1x PSU
- 1x microfiber cloth
- 4x self adhesive rubber feet

Intellimix Multi I/O Loom analog YT2330

- analog out 5+6 (XLR-M),
- GPO 1-4 (D-Sub),
- headphone out (Jack Socket)

Intellimix Multi I/O Loom digital YT2331

- AES in 2+3 (XLR-F),
- AES out 2+3 (XLR-M),
- GPI 1+2 (D-Sub)



Intellimix Base Unit 19“

Inputs*	<p>Mic/Line Inputs</p> <p>Line Inputs analog</p> <p>Line Inputs digital</p> <p>ADAT-S/PDIF</p> <p>USB</p> <p>AoIP (DANTE)</p>	<p>2 - balanced, with selectable sensitivity -77 dBu ... +18 dBu</p> <p>2 - XLR, balanced, max. +24 dBu</p> <p>2 - RCA, unbalanced, max. +24 dBu</p> <p>3 - AES3/EBU with sample rate converters</p> <p>1 - selectable ADAT 8-channel input or S/PDIF stereo input with sample rate converter</p> <p>1 - 16 mono/8 stereo inputs based on PUC2 technology</p> <p>1 - RJ45 4 mono channels</p>
Outputs*	<p>Line Outputs analog</p> <p>Headphone</p> <p>Line Output digital</p> <p>ADAT-S/PDIF</p> <p>USB</p> <p>AoIP (DANTE)</p>	<p>4 - XLR, balanced, max 24 dBu</p> <p>2 - RCA, unbalanced, max 24 dBu</p> <p>2 - Stereo</p> <p>3 - AES3/EBU with sample rate converters</p> <p>1 - selectable S/PDIF stereo output with sample rate converter or ADAT 8-channel output</p> <p>1 - 16 mono/8 stereo outputs based on PUC2 technology</p> <p>1 - RJ45 4 mono outputs</p>
Others*	<p>GPI/GPOs</p> <p>APC Extension-Ports</p>	<p>2 - GPI via optocoupler</p> <p>4 - GPO from PhotoMOS relay</p> <p>4 - RJ45 powered Ethernet for extensions</p>
Options*	<p>Internal Extension Slot</p> <p>External Slot</p>	<p>1 - for other AoIP standards</p> <p>2 - for MADI</p>

*channelcount in mono

Intellimix Extensions

MADI Port, single mode STP YT2300

56 or 64 AES 10 MADI input channels,
56 or 64 AES 10 MADI output channels

MADI Port, multimode STP YT2301

56 or 64 AES 10 MADI input channels,
56 or 64 AES 10 MADI output channels

AES67 RAVENNA Livewire+ Interface YT2305

64 channels in (8 streams)
64 channels out (8 streams)

Multi I/O Box YT2310

2 mic/line inputs, 2 headphones out,
8 analog line inputs, 8 analog line
outputs, 3AES3/EBU inputs, 1 SPDIF
input, 2 AES3/EBU outputs,
1 SPDIF output, 2 USB Audio IF,
10 GPI, 10 GPO, 2 ACI

Analog I/O Module YT2313

18/24dBu, 4 analog line inputs,
4 analog line outputs, 4 GPI isolated,
4 GPO isolated

Digital I/O Module YT2311

4 AES3/EBU/SPDIF inputs with sample
rate converters, 4 AES3/EBU/SPDIF
outputs

Dual De-/Embedder YT2312

2x 3G/HD/SD SDI De-embedders,
2x HD/SD SDI Embedders